



Royal Craft Development GRC

Delivering on time



**QUALITY
SERVICE
INTEGRITY**

**Manufactures of All Types of
GFRC & GFRP Products**



About us

Incepted in the year 2016 at Gurugram (Haryana, India), we “Royal Craft Development GRC” are a well-renowned manufacturer and supplier of a comprehensive range of GRC Screen, GRC Elevations, GRC Claddings, GRC In Railings, etc. These products are designed and manufactured using the finest quality basic material and highly advanced machines under the stern guidance of our dedicated professionals in adherence with market quality standards. The products provided by us are highly appreciated among our customer for their remarkable features such as alluring look, intricate design,

captivating pattern, elevated durability and fine finish. Additionally, these products are made available in designs and finishes in order to furnish the exact necessities of the patrons within the estimated time span. We are offering a product with brand name Royal Craft Development GRC.

In order to design and manufacture the offered products, we have set up pioneering and innovative infra structural base that covers an extensive area. This base is further segregated into variegated units such as manufacturing, quality testing, warehousing & packaging, etc. Our manufacturing unit is well-furnished with hi-tech machines, tools and equipments that enable us to furnish the vast requirements of the patrons. Blessed by a team of dedicated and experienced professionals, we have been able to deliver these products within the estimated time span. Our team members struggle hard in close-management in order to attain the objectives of our organization. Our team members attend various industrial seminars and workshops on a regular basis to keep them updated with the latest market developments.

INTRODUCTION TO GFRC

(Glass Fiber Reinforced Concrete, GFRC, GRC, FRC) This is an introduction into the world of Glass Fiber Reinforced Concrete (GFRC), also referred to as Fiberglass Reinforced Concrete (FRC) and Glass Reinforced Concrete (GRC). Since its introduction, GFRC has become extremely popular among the Architect and Design industry. Along with this popularity came some concerns about the quality of the material, and how best to use GFRC. To eliminate these concerns, Royal Craft Development GRC compiled this information to better educate those interested in GFRC.



COMPOSITION

Composition - GFRC is composed of Concrete- Portland cement, Aggregates – Selected crushed stone or silica sand Glass Fibers-to provide tensile and flexural strength, Polymers- to improve toughness GFRC can be used wherever a light, strong, weather resistant, attractive and fire retardant material is required. GFRC can be used as Screens wall panels, window surrounds, spandrels, column covers, soffits, cornices, brackets, quoins, railings, pilasters, copings, domes, etc. Landscape and hardscape uses include site furnishings, planters, bollards, urns, tables and fountains. GFRC is used in historical restorations and renovations, for the replication of building ornaments of terra-cotta, carved stone and even wood Royal Craft Development GFRC pioneered its use in other areas, including GFRC sandwich panels, bus shelters, security barriers, noise barriers, marine structures, cable ducts, floating pontoons, sun screens and storage tanks. Relatively easy to form and lightweight, GFRC allows the designer the freedom to design with less restrictions and weight than most other materials. Installation is easier, and there is less of a load imposed on the structure. Royal Craft Development GFRC will normally weight between 3 to 6 kg/sqft. Glass fibers used in Royal Craft Development GFRC have the following properties: »A high tensile strength (1700 N/mm²), 3-4 times higher tensile strength than steel. High modulus (in other words not stretchy, 10 times that of polypropylene. Low modulus fibers on the other hand, stretch and allow concrete to crack). Will never rust and so does not require a minimum cover »Inorganic with no health risk »Non combustible, so it will not burn

TEAM

We are blessed by a team of skilled and creative professionals in order to provide the best quality products to our esteemed customers. Employed through severe recruiting process, we have appointed our team members on the basis of their experience and knowledge. Our team members are well-versed in-depth knowledge of this industry and work hard in close association with each other in order to meet the specific requirements of clients. In order to achieve set organizational objectives within the promised time span, our professionals endeavor hard 24x7.

PRODUCTS

COLUMNS



CORNICE



BALUSTER



TECHNICAL SPECIFICATION

TECHNICAL SPECIFICATION

The following are broadly the main ingredients that go into the manufacturing of any GRC elements, Namely:

-Cement Contents (White/Grey)	50%
-Quartz fine silica sand (graded and selected)	50%
-Alkali Resistant (AR) Glass Fibre (NEG JAPAN)	3% to 5%
-Polymer	5% to 7%
-Plasticizer	0.5% to 0.75%
-Mould material	Rubber/FRP(Reckli Germany/Duramould U.K)
-Pigments	Buyers's, Germany

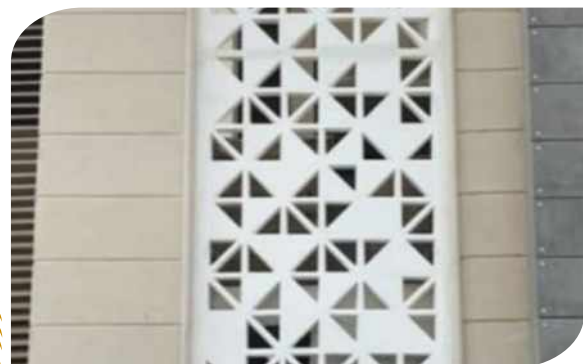
GRC MATERIAL PROPERTIES

Thickness	-	10mm to 40 mm (or more depending upon size & shape)
Weight	-	25 to 70 kg. per sq.mtr (or more depending upon size & shape of features.)
Dry Density	-	1.8 to 2.2 t/m ³
Colour	-	Any other colours
Texture	-	Acid wash / Stone finish Plain finish Paintable & Metallic Finish

TYPICAL PROPERTIES OF GRC

Typical Property	-	Result (Machine Spray) at 30 days	Premix Casting
Glass Fibre (Alkali Resistant)	-	3.5% to 4% depending Upon GRC components	3% to 4%
Tensile Strength	-	6 to 11 Mpa	5 to 8 Mpa
Compressive Strength	-	40 TO 65 Mpa	35 to 55 Mpa
Impact Strength	-	7 to 20 kg/m ²	7 TO 15 kg/m ²

SCREENS



DOMES



CLADDING



BRACKETS



BOLLARDS



PRODUCT

- | | | |
|------------------------|----------------------------|---------------------------------|
| 1. Screens | 8. GRC Planters | 15. Chimney |
| 2. Cornice | 9. Concrete Furniture | 16. Murals & Decorative Product |
| 3. Domes | 10. Bollards | 17. Pedestal |
| 4. Brackets | 11. Window/Doors Surrounds | 18. Pergolas |
| 5. Railings/Balustrade | 12. Finials | 19. Sculptures |
| 6. Cladding | 13. FRP Planters | 20. Wall Caps |
| 7. Column/Capital | 14. Gazebos | |

FOUNTAIN



CONCRETE FURNITURE



PLANTER



Royal Craft Development GRC

Khewat No 492, Village Bandhwari, Tehsil Wazirabad, Distt. Gurugram-122003

Contact: +91 9667593275 | +91 9990673991

Email: royalgrc.india@gmail.com